

**2019**

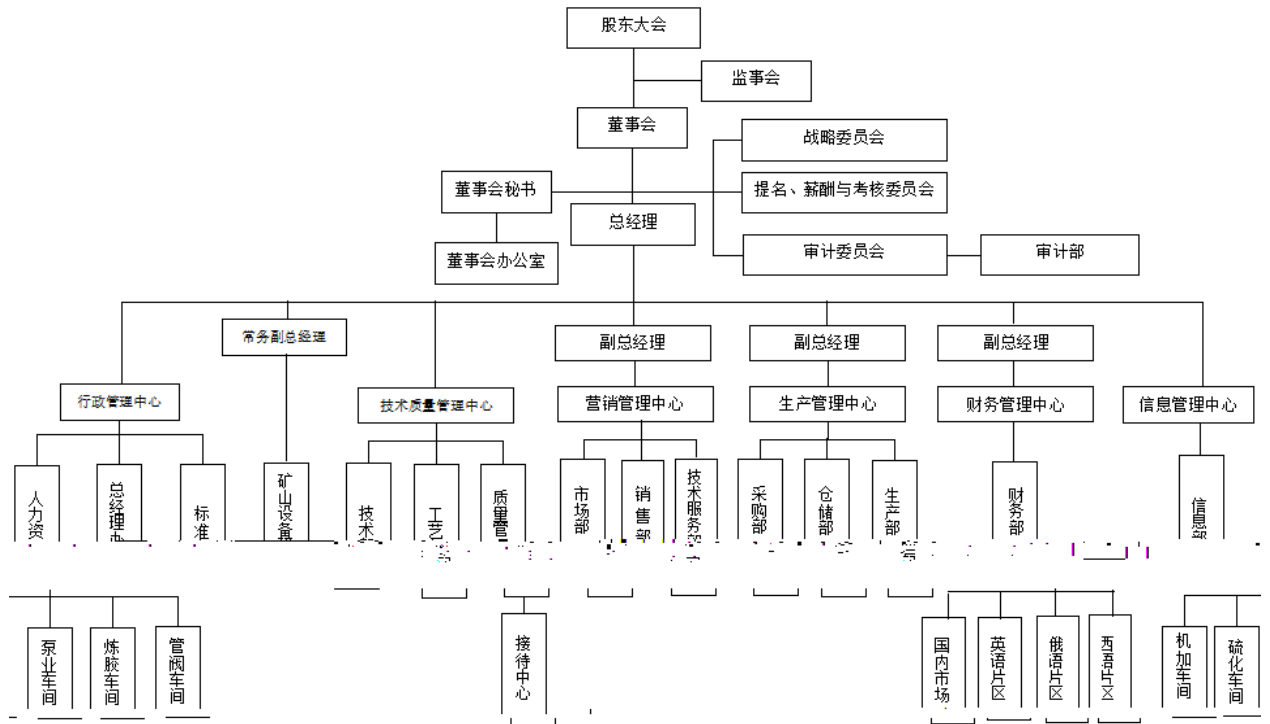
2019 12 31

1

2

1

### 公司组织结构图



2

3

4

ERP

PDM

PDM

MES

5

6

,

7

8

9

10

11

2019 IPO

2020

2 12

12

)

1

1

5%

5%

2%

2

2

(1)

(2)

( )

2019 1 1 2019 12 31

2020 4 15